



Bismillah Group of Companies
Engineering & Construction



To become a world class engineering,
manufacturing and construction company,
operating internationally.

Contents

About us

Company Introduction

Human Resource

Equipments

Management System Certification

Global Footprint

Bismillah Group Of Companies Services

Steel Structure (Mega Projects)

Storage Tanks

Equipments

Pre Engineered Building (PEB)

Parking Shed (With Tensile Membrane)

Radar Tower

HVAC

Refrigeration Plants

Chemicals/ Storage Tanks/ Vessels

Equipment Manufacture

Cement Silos

Health, Safety & Enviornment (HSE)

Social Responsibilities

Our Respected Clients

About Us

An excellent contractor and construction & engineering services provider expertized in Oil & Gas procesing, tank farm, refrigeration, piping, refining and steel mils, textile industry and cement plant etc.

More than 25 years of domestic and overseas development history.

Global footprints across lands and oceans of 12 different countries.

A wide variety of project services including designing, construction, execution & commissioning.

Bismillah Group of Companies
Engineering & Construction



About Us

Affiliate Subsidiaries

10 Companies

With more than 25 years of domestic and overseas engineering and construction experiences, we have become trusted contractors by providing a comprehensive line of services, from feasibility study, FEED to detailed design, procurement, construction, and commissioning.

Global Footprints

07 Countries

Completed and ongoing diversified projects are located in 12 different countries and regions all around the world, such as Saudi Arabia, UAE, Afghanistan, Bahrain, Oman, Libya etc.

General Introduction

Bismillah Group of Companies is one of the fastest growing company, with diverse interest and capabilities. It offers integrated design, engineering, procurement, construction and project management services in the refrigeration plant, cold storage, piping works, steel structure, storage tanks, silos, electrical and instrumentation cladding and insulation works.

BGC has been able to execute challenging projects despite surmounting odds. Difficult weather or terrain has not broken the spirit of the team, which has delivered consistently and brought accolades to the company.

BGC has also gained the confidence of the major international contractor and has made its customer believe that BGC is indeed a pleasure to partner with.



About Us



Human Resource

More than 220 employees, including more than 12 experienced project management personnel, 15 professional engineers and 200 skillful technicians and workmen.



Equipments

Bismillah Group of Companies possesses equipments including large machinery, automatic and semi-automatic selling sets, drilling units, electrical equipment, lifting equipments, etc.



Management System Certification

ISO 9001:2008 Quality Management System

ISO 14001:2004 Environmental Management System

OHSAS 18001:2007 Occupational Health & Safety Management System



About Us

Global Footprints



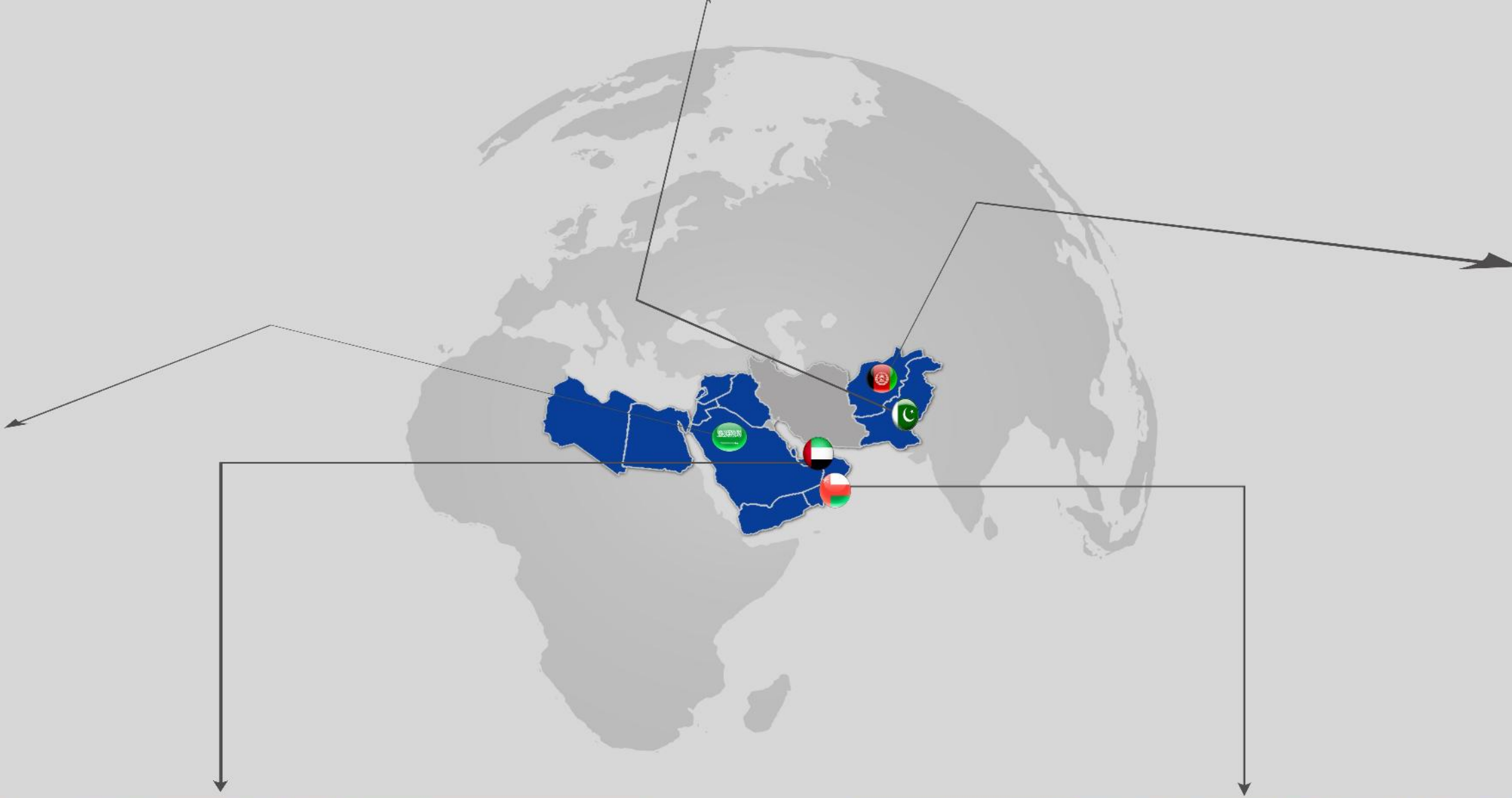
Pakistan



Saudi Arabia



Afghanistan



United Arab Emirates

Sharjah

Dubai



Kingdom of Oman

Steel Structure Mega Project

Refurbishment- Uplift of National Cricket Stadium Karachi

(Karachi-Sindh)

This Project specializes are in Additional steel works in existing structure and field fabrication and erection of steel structure works such as:

Specialized team and tools & tackles are available for the shop detailing of fabrication drawings, fabrication, surface preparation & painting, shop fit-up trial assembly and erection of steel structures. 400 tons Steel used it.

Beside fabrication of usual Rolled Sections, large sized built-up sections are also fabricated using steel Pipes. For this purpose we have expertise to control the Thermal Distortion of Plate fabricated built-up sections.



First time ever in Pakistan Bismillah Group of Companies are going to Installed Tensile Fabric Membrane at National Stadium Karachi with International Consultant for Assistance. experience in the design, manufacture and installation of tensile fabric structures.

Works on the stadium started in 2017, and included refurbishment of all Enclosure Roofs With the additional Steel Structure approx .400 tons and the construction of a large innovative Roof Membrane that is to cover of the stadium. The National Stadium will be the first sporting venue in Pakistan to have roofs made of Membrane Roof. The Membrane Roof are fireproof and waterproof and can last up to 25 years.



Steel Structure Mega Project

Sibi Harnai Khost Railway Track (Sibi-Balochistan)

This division specializes in both shop and field fabrication and erection of steel structure works such as:

Specialized team and tools & tackles are available for the shop detailing of fabrication drawings, fabrication, surface preparation & painting, shop fit-up trial assembly and erection of steel structures.

Beside fabrication of usual Rolled Sections, large sized built-up sections are also fabricated using steel plates. For this purpose we have expertise to control the Thermal Distortion of Plate fabricated built-up sections.

Equipments for surface preparation and EPOXY paint application are available for the shop painting of steel structures.

Rehabilitation Restore the Rail Traffic Sibi - Harnai - Khost Section



NLC has awarded the project of Steel Structure rail bridges traffic Sibi to Harnai Kosht section. Bismillah Engineering & construction has started the construction work to restore Sibi-Khost section.



The project is being executed in collaboration with the National Logistic Cell (NLC) and Bismillah Engineering & Construction, The rail track between Sibi and Harnai was laid by the British in 1884, touching Nakas, Shahrigh Khost and Zhob.

There have been eight railway stations and restore twenty bridges on the section and at least 133 kilometers track required rehabilitation.

The Scope is to fabricate semi-through bridge around weightage 1500 tons.

The aim of rehabilitation project is to restore the rail traffic between Sibi – Harnai – Khost Section and revive economic activities in the area.



Steel Structure

This division specializes in both shop and field fabrication and erection of steel structure works such as:

- Pipe Racks.
- Multi story Industrial Buildings.
- Lattice type towers
- Jetties & Terminals
- Industrial Sheds

Steel Structure

Defence Housing
Authority (DHA-Karachi)

**Solar Shed
Car Parking**
Project



Specialized team and tools & tackles are available for the shop detailing of fabrication drawings, fabrication, surface preparation & painting, shop fit-up trial assembly and erection of steel structures.

Beside fabrication of usual Rolled Sections, large sized built-up sections are also fabricated using steel plates. For this purpose we have expertise to control the Thermal Distortion of Plate fabricated built-up sections. Equipments for surface preparation and paint application are available for the shop painting of steel structures.

Steel Structure

Bahria Town (Karachi)

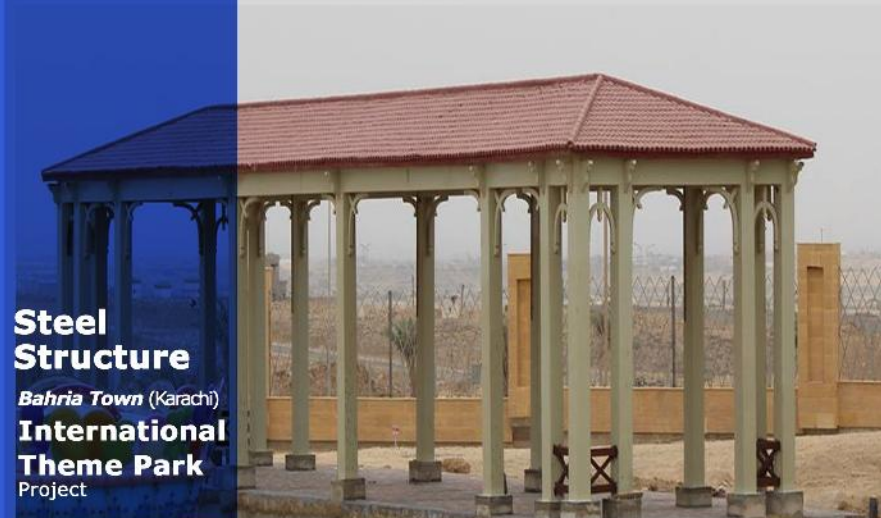
Gate House
Project



Steel Structure

Bahria Town (Karachi)

**International
Theme Park**
Project



Steel Structure Main Projects

DHA City Solar Shed

NLC has awarded a Solar Shade to BEC on April 2015. The project is based on 1.2 MW Solar Shade including group mounted and proof tops structure. The scope of project includes civil & Mechanical work.

The civil scope includes excavation, footing, columns and Bach filling of foundation. The civil work has now 100% completed. The mechanical scope include the supply, fabrication and installation of 500 Ton steel. The project manager (Mumtaz Hussain) and site Incharge (Hunaid Iqbal) along with experience manpower Program outstanding and keep the progress as per plan. The project is 100 % complete.



Grand Bahria Gate House



UN Enterprises (UNE) has awarded the project of Grand Bahria Gate House to Bismillah Engineering & Construction in December 2014, having the cost of around Rs.130 million. The scope of work includes civil and mechanical. The civil works is to supply and installation of the foundation anchor bolts and their templates. The mechanical scope is to complete supply, fabrication and erection of the Grand Bahria Gate House with Steel Structure profile. The project peak manpower is expected to be around 250 with number of equipments deployed to be around 30. The project is completed.

Bahria International Theme Park

After successfully completion of bahria Gate house project , bahria Awarded the International Theme Park Project of



Train Station , Bridges & Rail Track
Installation of 8 KM. Scope was
complete in four month , including
the civil works & fabrication of 300
Ton steel for station & Bridges.



Equipment Manufacture Mega Project

Project of Walking Hearth Reheating Furnace

(Karachi-Sindh)

Amreli Steel selected to Bismillah Engineering & Construction to analysis expertise of manufacture the mechanical equipment's , Amreli ordered the equipment's such as 55 meter long .

recuperating tor casing and furnace ducting. Complete scope of weight around 300 ton.

Project of Walking Hearth Reheating Furnace



The Bismillah Engineering & Construction, entrusted to revamp the new construction furnace combustion equipment.

Scope of Works:

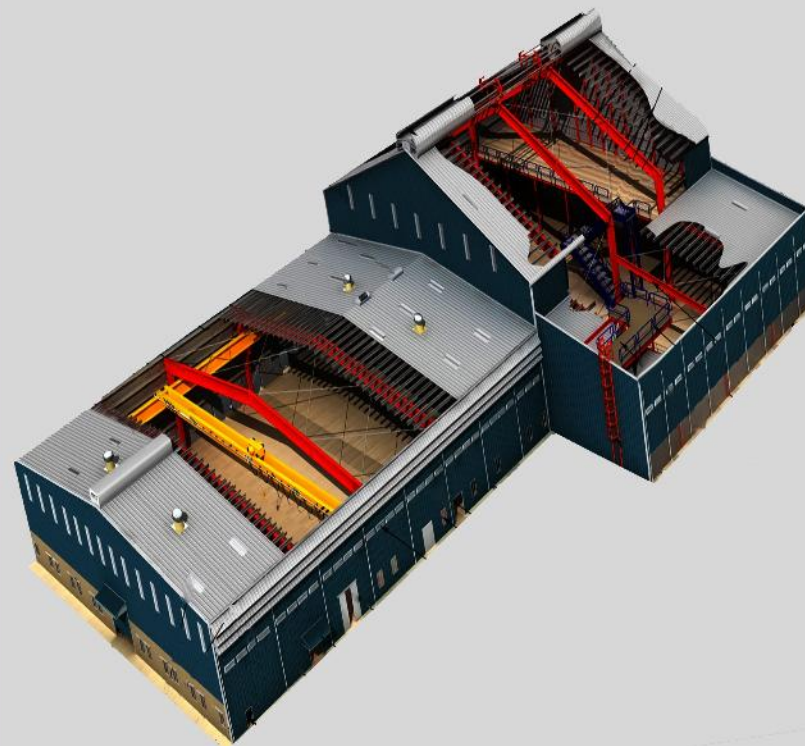
- 1 - Stack 55m long.
- 2 - Wast Gas Duct.
- 3 - Recuperator Tor Casing.
- 4 - Cold Air Ducting.
- 5 - Natural Gas Piping
- 6 - Hot Air Piping

As a result, the plant benefited from reduced NOx emissions, simplified control of the furnace heat up and accurate temperature homogeneity on the product section.



Pre Engineered Buildings

At Bismillah Group of Companies we are constantly innovating and are excited about creating custom made buildings for our clients. We keep our projects economical and cost competitive. We have a team of engineers and designers who are highly skilled, enthusiastic and excel in what they do. Most importantly we have an attitude of being ahead of schedules without compromising on any of the standards.



Pre Engineered Buildings Main Projects

Dockyard Engineering Complex



Bismillah Engineering & Construction has been awarded the PEB Structure Project for Dockyard Engineering Complex in 2016 having the cost of around Rs.13 million. The scope of work includes fabrication and installation of Pre-Engineered rooftop on an area of 462 sq meter.

Steel Structure -- Bahria Town Cinema

Deecon has awarded the project of Bahria Town CineGold Project to Bismillah Engineering & Construction in November 2015 having the cost of around Rs.5.5 million. The scope of work includes fabrication and installation of Pre-Engineered Cinema Structure.

The mechanical scope is to complete design, supply, fabrication and erection of Cinema Structure. The project has already finished with approximately 33,600 manhours.



Steel Structure -- Artistic Milliner



Bismillah Engineering & Construction had awarded the PEB Structure Roof Shed project for Artistic Millin November 2015 having the cost of around Rs.7 million.

The mechanical scope is to complete design, supply, fabrication and erection of rooftop.

Parking Shade

Looking for Car Parking shade suppliers in Pakistan? We are providing high-quality material Car Parking Shades in Pakistan and UAE with all fabrication, supply and installation services. Our car park shades are very durable for Pakistan hot weather and provide 100% shade to the cars that will maintain interior, glow, and shine of car for a long time. We provide both custom size and standard size car park sheds with all necessary structure and fabric calculation of shades.



We use high-quality Shading material for car shades like Mehlar PVC, Recently we are worked with "Popular Cement" And Bolari Air Base in Ormara.

We use Galvanized Steel Structure, MS Structure with Epoxy, Aluminum Structure, for the shades that will give long life to the parking shades. Using the latest technology and highly advanced machinery in cooperation with our experienced team of engineer, technicians, and fabricators we have successfully made some recurring tents and shades structures which helps in benefiting hundreds in outdoor living in PAKISTAN and UAE. We provide 5 to 15 years of warranty on parking shades structure and fabric.

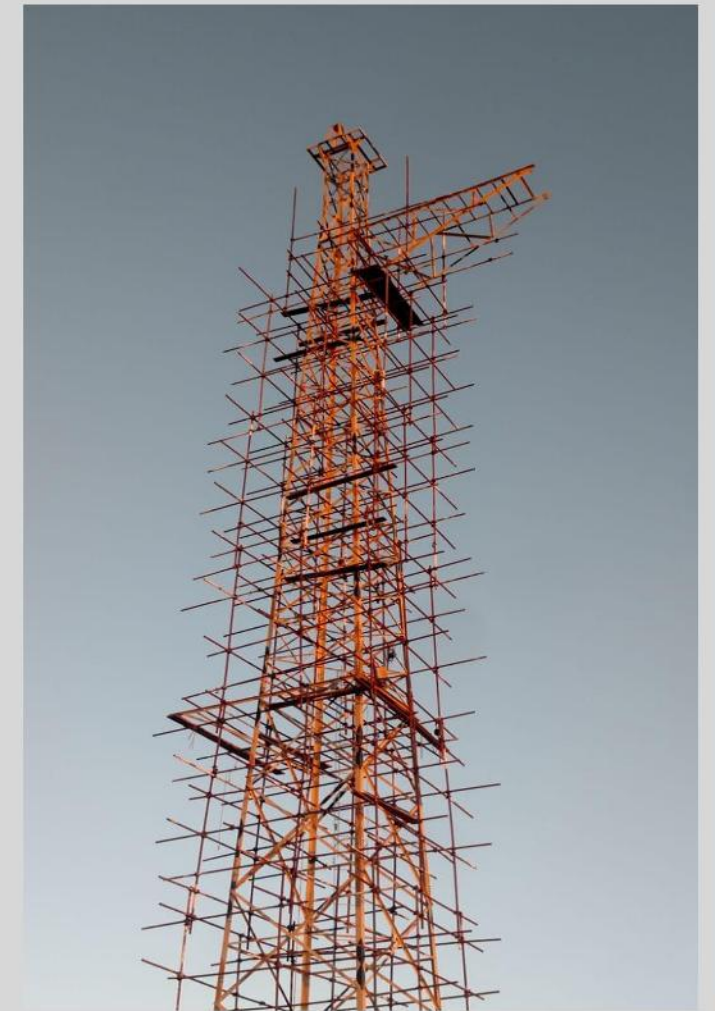


Radar Tower

Bismillah Group of Companies has more than 12 years of experience in design and manufacturing of Radar supporting structures in Pakistan, Middle East. That's all we do manufacturer of modular steel structures including mobile towers and portable towers. Capabilities include assembly of modular components at erection site or transport of complete units and structural engineering to meet different remote location. Painting or hot dip galvanizing available for steel components. Optional modular walls, handrail, stairs, ladders, lighting, electrical packages and installation are also available



We have been successfully constructed 5 Furuno Radar Tower and delivered to Al Mansor Engineering (pvt Ltd.) with five different location in Balochistan. All of tower is having 125 ft. 1st tower erection Sapat Bandar before 60 km Kund Malir Balochistan. 2nd tower erection at Kund Malir Balochistan. 3rd tower erection at keti Bandar same as way we are successfully erection all towers in Balochistan. The project required careful planning to avoid ongoing unrest in the country while being able to execute the tower erection works in a single mobilization. Challenges included heavy lifting equipment limitations requiring the tower top to be constructed.



HVAC

BGC is a big name in Pakistan & GCC, as far as HVAC Ducting Works & Products are concerned. We are proud to say that we are one of the biggest importer of P3 panels in Pakistan. We are customer oriented progressive organization and we deal in quality products only. We have captured the industry sector such as textile, food industry, hospitals, hotels & pharmaceuticals. We look forward to achieve even greater levels of success in the future.



Textile Industry

We have accumulated plenty of EPC experience in different kinds of area for supporting facilities in textile industries.



Textile Industry



Refrigeration

This Service specializes in Refrigeration installation Fabrication & Erection of Refrigeration works.

Extensive Experience has been accumulated in refrigeration fields of industry, especially in Pakistan, Middle East & Africa.



Refrigeration Project

IFI Food Pvt.Ltd
(Karachi)

Refrigeration Project

Euro Cool Chain
(Pvt. Ltd)
(Karachi)

Refrigeration Project

Fauji Meat LTD (FML)
(Karachi)

Engineering & Construction Services

Refrigeration National & International Main Projects

IFI FOOD PVT.LTD

IFI FOOD LIMITED has awarded the complete Refrigeration System Installation to BEC. The scope of work includes Compressor 4 Nos, Cooler Nos 18, Blast Freezer 4 Nos Condensor 1 Nos & Ice Flag Machines

The electrical scope includes the installation of electrical equipments, cable laying, and termination of control panels and commissioning of instruments.

Refrigeration system, compressors, AHUs unit have been mostly completed with all piping works, valves station, cladding and all ducting work. Major work have been done by BEC team



Euro Cool Chain PVT.LTD

Euro Cool Chain (Pvt.Ltd) is sign with Bismillah engineering & Construction of the complete Refrigeration System Installation to BEC. The scope of work includes Compressor 4 Nos, Cooler Nos 11, Condenser 1 Nos.

The electrical scope includes the installation of electrical equipment, cable laying, and termination of control panels and commissioning of instruments.

Refrigeration system, compressors, AHUs unit have been mostly completed with all piping works, valves station, cladding and all ducting work. The Project Completed by BEC team with the support of management.



Fauji Meat Limited (FML)

Fauji Meat Ltd has awarded the AHU Ducting 30,000 sq. ft to Bismillah Engineering & Construction. BEC has completed fabrication of AHU Ducting in FML. We deal in Duct System with superior strength, low leakage and Vibration free.

The AHU Ducting scope includes the installation AHUs unit have been mostly completed with all piping works, valves station, cladding and all ducting work. Major work have been done by BEC team with the support of management.



Refrigeration

This Service specializes in Refrigeration installation Fabrication & Erection of Refrigeration works.

Extensive Experience has been accumulated in refrigeration fields of industry, especially in Pakistan, Middle East & Africa.



Refrigeration Project

Unique Poultry International (Pvt. Ltd)
(Rawalpindi)



Refrigeration Project

Master Baker
(Dubai)



Refrigeration Project

MHK
(Dubai)



Engineering & Construction Services

Refrigeration National & International Main Projects

Unique Poultry International (Pvt. Ltd)

Unique Poultry International (Pvt. Ltd) is accord with Bismillah engineering & Construction of the complete Refrigeration System Installation to BEC. The scope of work includes Compressor 5 Nos, Cooler Nos 19, Condenser 2 Nos, AHU Nos 3 & Ice Flag Machine.

The electrical scope includes the installation of electrical equipment, cable laying, and termination of control panels and commissioning of instruments.

Refrigeration system, compressors, AHUs unit have been mostly completed with all piping works, valves station, cladding and all ducting work. The Project Completed by BEC team with the support of management.



Master Baker (Dubai)

Master Baker Project Dubai TSSC provided a complete installation work of Refrigeration system this is a great opportunity of BEW in 2017. Mr. Faraz Ahmed Site In-charge & Mr. Habib ur Rehman the site supervisor outstanding perform throughout the project. The scope of work included Mechanical Insulation Cladding and Electrical works. The Project is completed.



MHK (Dubai)

MHK(DUBAI) fanar Al Khaleej provided a great opportunity to BEW in UAE to perform the MHK project in 2016. Scope of work includes complete installation of Refrigeration system included Mechanical Insulation Cladding and Electrical works. Mr. Faraz Ahmed along with experience manpower outstanding and keep the progress as per plan the site in-charge performed outstanding throughout the project. The management gave a special award to them for their motivation and successful completion of the project.



Refrigeration

Extensive Experience has been accumulated in refrigeration fields of industry, especially in Pakistan & Middle East.



Refrigeration Project

**BANNS MAKKAH
SLAUGHTER HOUSE
Kingdom of
SAUDI ARABIA**

Refrigeration Project

**SIBCO (JEDDAH)
Kingdom of
SAUDI ARABIA**

Refrigeration Project

**AL-SAFFA
(MUSCAT)
Kingdom of
OMAN**

Engineering & Construction Services

Refrigeration Main Projects



BIG BIRD FOODS (Lahore)

Big Bird Foods (Pvt) Ltd has awarded the complete Refrigeration System Installation to BEC. The scope of work includes the mechanical, electrical, cladding and HVAC. The mechanical scope includes the steel structure, piping and equipment installation.

The electrical scope includes the installation of electrical equipments, cable laying, and termination of control panels and commissioning of instruments.

E&I works and drain piping is in progress. Steel Structure racks, Refrigeration system, compressors, AHUs unit have been mostly completed with all piping works, valves station, cladding and all ducting work. Major work have been done by BEC team with the support of management.

NEAT FOODS (Lahore)

Grade Refrigeration L.L.C awarded the NEAT FOODS project (Refrigeration System Installation) to BEW. The scope of work includes the mechanical, electrical, cladding and HVAC. The cost of the projects is around Rs. 4 million. The project was initiated by Naushad Akhter and later Mr. Bilal and Mr. Shabbir Ali successfully completed and commissioned on time.

This is major accomplishment for the BEW team practicing the best HSE standards throughout the projects. However BEW's expert rigging staff executed the job remarkably which precisely major all safety measures.



ANHAM COLD STORE (Afghanistan)

Bismillah Engineering Works (BEW) also made its entry in Afghanistan with two projects awarded by Grade Refrigeration L.L.C (one in KHANDAR and one in KABUL). These projects would enhance BEW's experience in the field of refrigeration and electromechanical projects. The team efforts were really commendable under the supervision of Saad Fazil (Project Manager) as they cope with the difficulties faced in the construction of the project.



AL-SAFFA (OMAN)

Grade Refrigeration L.L.C provided a great opportunity to BEW to perform in Oman in 2013. Mr. Faraz Ahmed, the Site In-charge and Saad Fazil, Admin In-charge performed outstanding throughout the project. The management gave a special award to them for their motivation and successful completion of the project. The scope of work included mechanical and electrical works.

The mechanical scope included 6compressor, 32 evaporators, 2 blast freezer and around 25,000 Dia inches piping & cladding works. The electrical scope included the cable laying, installation of electrical panels and commissioning of instruments.

SIBCO (KSA)

Bismillah Engineering Works (BEW) signed the project with Grade Refrigeration L.L.C in 2014. The owner of the project is Saudi Industrial Beverages Co. (SIBCO). The scope of work included mechanical and electrical installation works of refrigeration system. The project was completed under the supervision of Mr. Bilal (Site Incharge) with the help of high management.

The mechanical scope included the installation of compressors, chillers, AHU's, condensers, piping works, pipe supports, Ducting and cladding works.

The electrical scope included the panel installation, cable laying and termination of instruments.



Refrigeration

This Service specializes in Refrigeration installation Fabrication & Erection of Refrigeration works.

Extensive Experience has been accumulated in refrigeration fields of industry, especially in Pakistan, Middle East & Africa.



Refrigeration Project
Al-Shaya (Dubai)



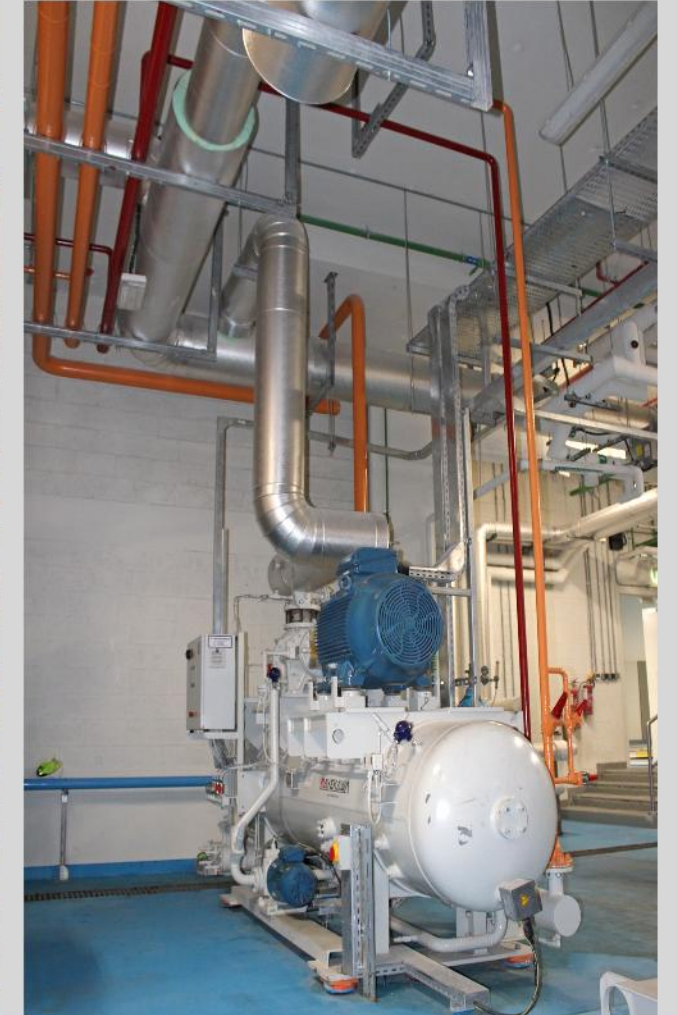
Engineering & Construction Services

Refrigeration National & International Main Projects

Al-Shaya (Dubai)

Al-Shaya (DUBAI) fanar Al Khaleej provided a great opportunity to BEW in 2016. Mr Faraz Ahmed, the site in-charge performed outstanding throughout the project. The project is completed in starting of 2017. The project manager (Faraz Ahmed) and site Incharge (Habib ur Rehman) along with qualified employees outstanding and keep the progress as per plan.

The scope includes the installation of Refrigeration system, compressors, AHUs unit have been mostly completed with all piping works, valves station, cladding and all ducting work, electrical equipment, cable laying, and termination of control panels and commissioning of instruments.



Storage Tanks & Vessels

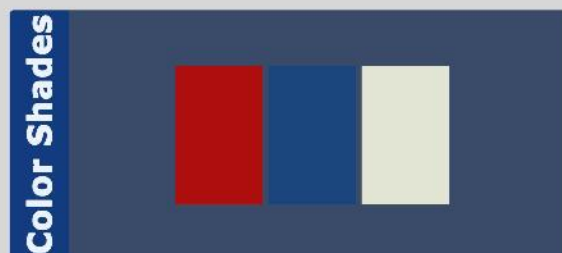


Technical Specifications

Capacity	Workshop	2000 Litres to 200.000 Litres
	SITE	As per requirement
Material of Construction	M.S.	ASTM A36, ASTM 515, Grade 70
	S.S.	304, 3041, 316 and 316 Liters

Facilities

- ⌘ Calibration
- ⌘ Provide Installation
- ⌘ Sandblasting and Painting
(As per Client Requirement)
- ⌘ Transportation
(Available on Request)
- ⌘ Thirdparty Inspection



Equipment Manufacture

Stainless Steel Mixing Tank

Bismillah Engineering Works makes stainless steel tanks and vessels for use in different types of industrial installations, such as dairies, breweries and pharmaceutical, biochemical, chemical and other processing plants.



Process tanks are designed and manufactured according to the clients' specifications, which may include special agitators, heat transfer jackets and insulation.

⌘ **Rigid Construction**

⌘ **Corrosion Resistant**

⌘ **Dimensional Accuracy**

⌘ **Highly Durable**

⌘ **Resistance against Temperature**

⌘ **Effective volume from 10 - 20000**

⌘ **Liters (Can be customized according to client's requirements)**



Equipment Manufacture

Equipment Manufacturing

Certificates for manufacture classification A1, A2, A3 pressure vessels and five large-scale fabrication yards of pressure vessels & steel structures are in hand of Bismillah Engineering and Constructions which holds enormous semiautomatic, automatic welding equipment, heavy bending & shearing machines (The maximum thicknes of rolled steel plate is 80 mm) and full set of NDT equipment. In addition, machinery processing capacity can be 10,000 ton every year.

Bismillah Group of Companies
Engineering & Construction

Equipment Manufacturing Screw Conveyors



Ø D	114mm	139mm	168mm	193mm	219mm	273mm	323mm
X mm	140	140	185	200	200	235	260
Y mm	120	120	165	180	180	215	240
C mm	190	190	250	250	275	330	405
L mm	On demand						
M mm	L + X + Y						
A mm	On demand						
B mm	On demand						
HA mm	According to diameter						
HB mm	According to diameter						

- ❖ Heavy duty type
- ❖ Vertical type
- ❖ U - type
- ❖ Standard type for use in batching plant
- ❖ Stainless Steel type

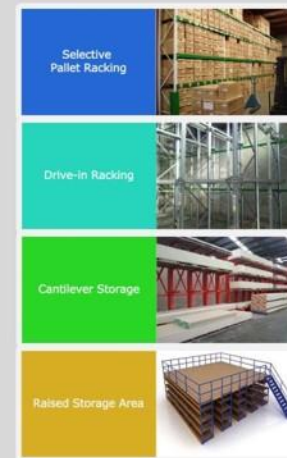
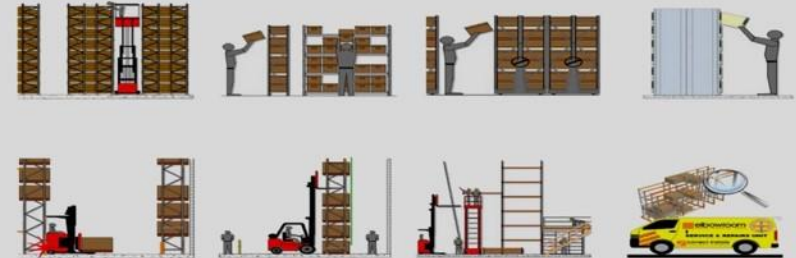


Equipment Manufacture

Equipment Manufacturing Racking System

We have a huge range of pallet racking options for your warehouse, depending on your priorities.

"From the need for first in first out storage to maximising storage space, to odd shaped items for storage."



Equipment Manufacture

Equipment Manufacture

We are able to design, process, manufacture and maintain all kinds of equipment's, skids and parts for Oil and Gas, Textile Industry, Steel Industry, Cement Industry etc.



Cement Silos

Bismillah Group of Companies are offer best Welded and Bolted Silos. Welded Silos are the best choice for short minimum installation time. Being shipped as a single piece all that needs to be done is lift the silo and put it on the foundation. Another advantage of welded silos is their leak-proof structure. While offering great transportation advantages Welded silos require short time for installation. Bolted Silos are best choice for long distance & installation. We are offered complete transportation services as per request of client side.



Technical Specifications	50 Tons	100 Tons	150 Tons	200 Tons
Material Type	Welded Mild Steel	Welded Mild Steel	Welded Mild Steel	Welded Mild Steel
Diameter	2200 mm	2900 mm	3500 mm	3700 mm
Shell Height	1000 mm	11500 mm	11500 mm	14250 mm
Screw Conveyor Connection	8,10,12,Inches As per Client Requirement	8,10,12,Inches As per Client Requirement	8,10,12,Inches As per Client Requirement	8,10,12,Inches As per Client Requirement
Bottom Shape	Cone/ Cylindrical	Cone/ Cylindrical	Cone/ Cylindrical	Cone/ Cylindrical
Delivery Time	10 - 12 Days	10 - 12 Days	10 - 12 Days	10 - 12 Days

Quality Description

- Welded Silo
- Portable and reliable
- Transportation will provided upon request
- Provide supervision for installation
- 10 to 15 years life
- Cylindrical cone bottom
- Capacity includes 50, 100, 150 and 200 Tons





Health, Safety & Environment

HSE is one of the Bismillah Group of Companies core values. We integrate HSE in all business activities.

Bismillah Group of Companies
Engineering & Construction

Health, Safety and Environment (HSE)

Bismillah Group of Companies conducts its business in safe and efficient manner, and strive continuously for zero harm to people, zero damage to the environment, and zero loss to assets.



The Integrated Management System

The integrated management system

The management of BGC is concerned with the identification and control of risks to their business.

Essentially these risks can be identified as:

Right First Time - Quality - ISO 9001

Without Injury - Safety - OHSAS 18001

Without Ill Health

Without Damage to our World - Environment - ISO 14001

QHSE



Dedicated Team



Muhammad Saleem
Chairman



Muhammad Akbar Saleem
Chief Executive Officer (CEO)



Muhmmad Babar Saleem
Director



Naushad Akhter
Chief Operating Officer (COO)



Mumtaz Hussain
Manager Projects



Muhammad Ibrahim
Finance Manager

Engineering & Construction Services

Our Philosophy Management Practices



Bismillah Group of Companies has an experienced marketing and sales team that is exceptionally talented, dedicated and objective oriented. Having customer satisfaction as their top priority, the sales team identifies the customer's needs & requirements and responds to them professionally, systematically and on time. The Marketing Department forms a vital bridge enabling BGC to understand and cater to the ever changing market needs. The team also looks after activities such as brand development, market research and feasibility studies, selecting and channelizing marketing activities through media, public relations activities and organizing exhibitions, seminars, etc. in order to accomplish the company's vision & goals.

The engineering department of BGC utilizes the standard code of practice and is equipped with analysis and design software such as STADD PRO, AUTO CAD & other internally developed Software's. These software's are handled by qualified structural engineers who are experienced in designing complex structures, enabling BGC to come up with the best possible design for any project of any complexity. Through the use of advanced software controlled engineering and production, the quality is improved along with efficiency and optimization. The Engineering team is ever ready to answer all and any technical queries emanating from the client at any point of time.



The Order Management team ensures that customer satisfaction is placed at the heart of our business. The OMD has the responsibility of live monitoring and controlling all ongoing projects to ensure their successful completion. To achieve the desired outcome on every project, the Order Management Department relies on a team of experienced engineers and professionals through all phases of the projects, namely - Planning, Design, Detailing, Production, Execution, Delivery and Erection.

Upon award of a project to BGC, The Manager (OMD) assigns an OMD Engineer to handle all technical and commercial aspects associated with the project from inception to completion. At the outset of the project, the OMD Engineer prepares a base schedule defining all milestones and activities and identifies major subcontractors and special requirements taking into consideration the size, complexity, end-use and location of the project.



Order Management Department communicates the project requirements to all other concerned departments within BGC such as Purchasing, Engineering (Designing & Estimation, Detailing), Manufacturing, Logistics, Erection and Accounting. Throughout the execution phase, the OMD engineer proactively monitors, controls and reports the progress of the project and any associated variations to the client at regular intervals.

Prior to commencement of shipment of fabricated steel to the site, the OMD team deputes a Project Engineer to assist the erection team in providing onsite service to BGC's clients. The Project Engineer makes very regular visits to the sites, throughout this phase of the project and communicates client needs to the OMD engineer ensuring efficient and timely response.



In addition to the Supply, Fabrication and Delivery, Bismillah Group of Companies through its Projects Department is also able to offer erection services. Erection is carried out by Bismillah Group of Companies personnel or subcontracted out to qualified Erectors who work under the direct management and supervision of BGC. A project Engineer from BGC will manage the project whenever erection is under BGC's responsibility. All revisions can be easily handled by coordination between BGC's engineering department and erection crew at site.

Our Respected Clients

Steel Structure Sector



Refrigeration Sector



Textile Sector



Diesel Tanks & Construction Sector



Piping Sector



Head Office

Plot # 32/C, Street - 9, Mezzanine floor,
Badar Commercial, DHA Phase - 5,
Karachi 75500 Pakistan
PO Box # 12481 Karachi Pakistan
Phone: +92 21 3534 3156 -7-8
Fax: +92 21 3534 3158
Email: info@bismillahgoc.com
Website: www.bismillahgoc.com

WorkShop

Plot No .97 Yousuf Ghot, Bin Qasim
Road , National Highway Karachi.
Karachi 72500 Pakistan.
Phone: +300 8240796
Email: info@bismillahgoc.com
Website: www.bismillahgoc.com

Dubai Office

Office No 106, 1st Floor Al Kazim
Building Near Burjuman Metro Station.
Dubai, United arab Emirates (UAE)
Bur Dubai PO BOX 85156
Phone: +971 52 637 6444
Email: info@bismillahgoc.com
Website: www.bismillahgoc.com